

Boomi DataHub

Build, synchronize, and enrich trusted data across your enterprise

Poor data quality is a very real problem in all organizations. Keeping information accurate and synchronized across multiple systems puts enormous pressure on already strained IT resources. But trusted data is the lifeblood of any enterprise.

Master Data Management (MDM) holds the key for ensuring data quality to drive efficiencies and improvements in every area of your operations. However, very few organizations possess the skills and resources to deploy a scalable responsive MDM system.

Boomi DataHub and its agile, cloud-native capabilities make it possible for your data stewards to model, match, synchronize, cleanse, and enrich data across your organization. With DataHub, you can easily scale your data governance processes to accommodate growth in data volume and accelerate your business outcomes.

KEY BENEFITS

Cloud Simplicity. Cloud Economy. Cloud Speed.

With next generation features, Boomi DataHub ensures your data is accurate, complete and upto- date. Setup, configuration, and management are all handled through a unified, cloud-native environment.

Increase Data Accuracy and Consistency

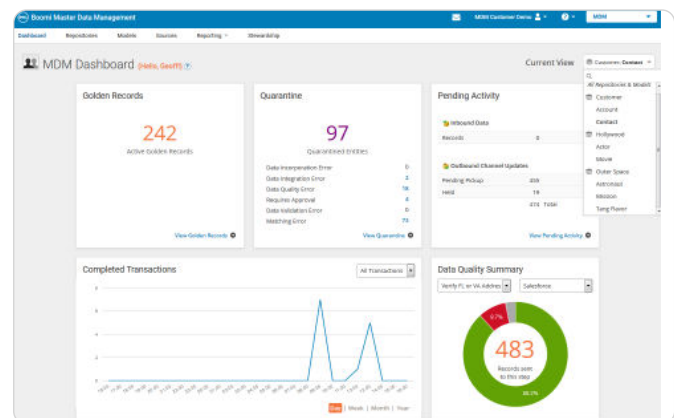
With increasing end points, point-to-point integrations quickly become unmanageable. Boomi DataHub uses a centralized data hub architecture that all contributing systems can use. It provides real-time validation, enrichment, and data matching across all connected systems. Leverage DataHub's automated change detection services to reduce noise between systems and the design of complex lookups.

Multi-Domain, Multi-Application MDM

Domain-specific MDM products hinder creation of a single source of truth for the entire organization. Boomi DataHub is domain agnostic and allows you to create custom fields for different data domains to support all your applications.

Accelerate Time-to-Insight

Boomi DataHub's comprehensive data management and governance capabilities ensure that the highest quality data is available to your teams so they can make decisions faster. As a part of Boomi's cloud-native, unified platform, DataHub is affordable and integrates with any combination of SaaS and on-premises applications.



Use our comprehensive dashboard to monitor and measure operational traffic and data quality metrics across all domains and sources.

KEY FEATURES

Boomi DataHub architecture provides customers flexible data management while retaining a single source of truth.



Centralized Data Quality

Validate, enrich and report on updates to master data through a collaborative, team-based cloud UI.



Real-Time, Bi-Directional Data Flow

Focus on data enrichment, not just validation, through real-time, bi-directional synchronization of data to your cloud and on-premises applications.



Data Stewardship

Manage data for consistency and accuracy with powerful tools to validate, cleanse, and merge quarantined records.



Data Governance

Centralized approval processes to enforce data governance using configurable rules-based policies.



Comprehensive Analytics

Leverage robust profiling statistics, reporting capabilities, and dashboards to monitor and measure the health of your data quality and master data programs.



Simplified Integration Mapping

Reduce integration development time for applications or user flows through a visual, no-code experience.



Boomi Suggest

Harness the power of the Boomi Community to model domains. Get feedback on how your models align with peers in your content domain.



Data Security

Encrypt sensitive data to safeguard data privacy and meet regulatory requirements.

b To learn more, visit us today at boomi.com/hub

Copyright © 2024 Boomi, LP. Boomi and the 'B' logo are trademarks of Boomi, LP or its subsidiaries. Other names or marks may be the trademarks of their respective owners.